



LETS MOVE UK

SALES & LETTINGS IN BRISTOL
ONLINE



6 Laurel Drive Bristol, BS16 7GD

Lets Move UK are delighted to offer to let this lovely 3 bedroom family home with GARAGE in the poplar area of Lyde Green. There is a Spacious hallway with downstairs cloakroom, separate Kitchen with white goods and a large lounge with French doors leading into the Garden . Upstairs are 2 Double bedrooms , the master bedroom with en suite shower room and one single bedroom . There is a family bathroom with modern suite and shower over the bath . The property has gas central heating . Outside the Garden has a patio area with steps into a lawn a Garage and parking for one car.

Lyde Green has great access to the ring road and ideally located for the MOD, Aztec West or the M4/M5 Interchange. Bath and Keynsham are well within reach, Emersons Green retail park is close by with a selection of shops and restaurants. There are buses that regularly run into Downend, Fishponds and the city centre.

A household income of £43500 is required for this property. There is a weeks rent holding fee required to secure the property and a 5 week deposit.

£1,450 Per Calendar Month

6 Laurel Drive

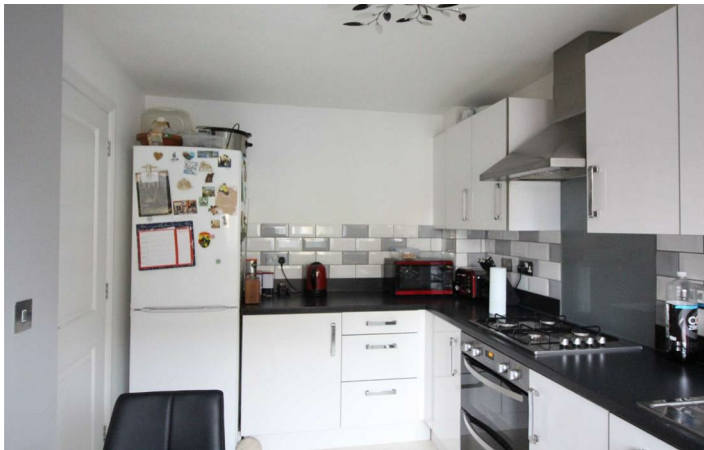
Bristol, BS16 7GD



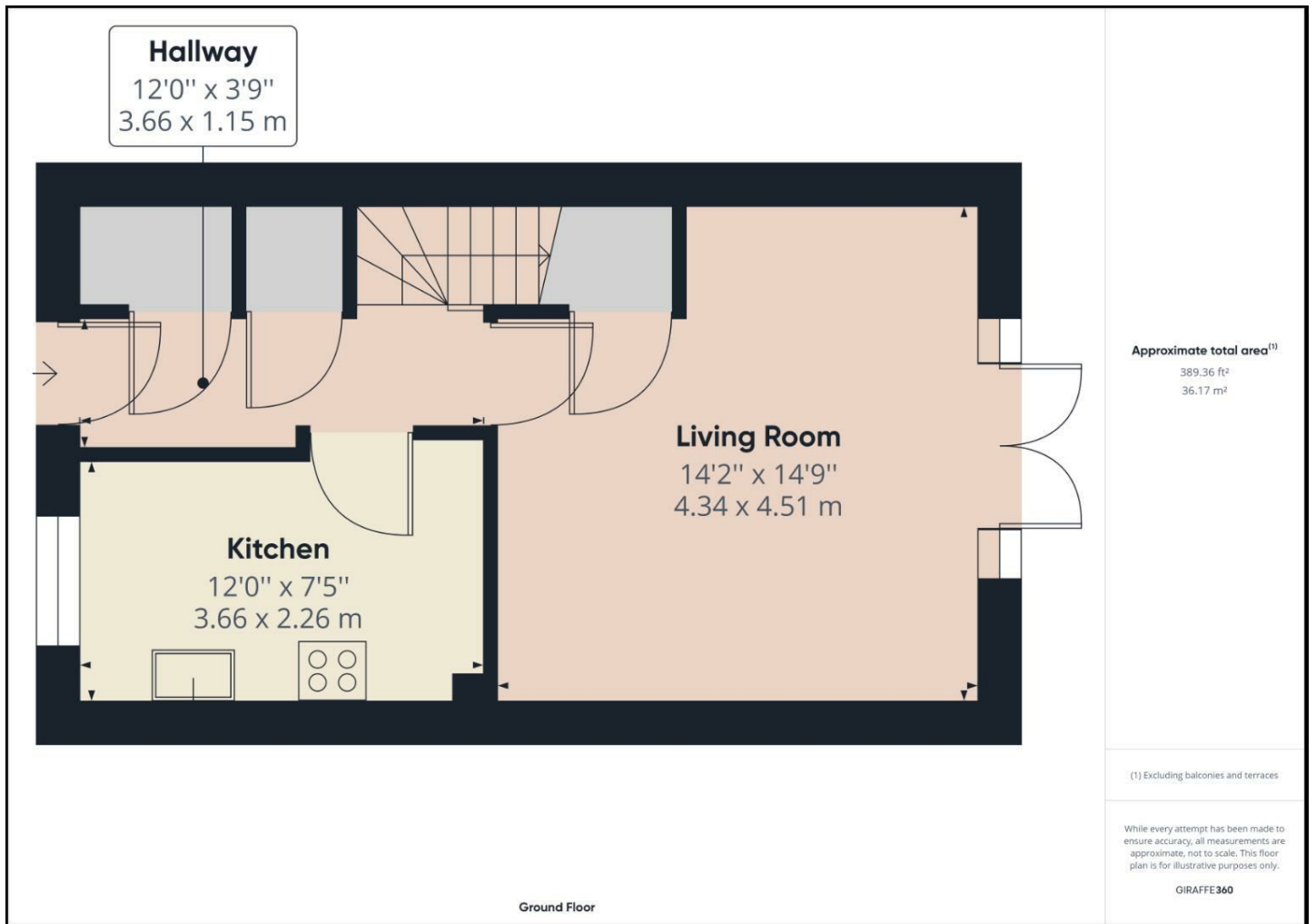
- GARAGE
- CLOAKROOM
- THREE BEDROOMS
- EPC BAND B
- GARDEN
- WHITE GOODS



[Directions](#)



Floor Plan



These particulars, whilst believed to be accurate are set out as a general outline only for guidance and do not constitute any part of an offer or contract. Intending purchasers should not rely on them as statements of representation of fact, but must satisfy themselves by inspection or otherwise as to their accuracy. No person in this firm's employment has the authority to make or give any representation or warranty in respect of the property.

